

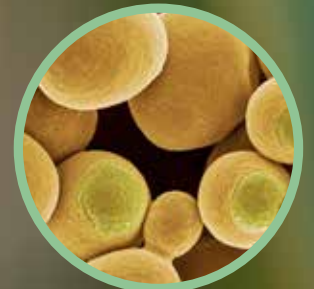
MYCOTOXINE-BINDER *line*

**Specific adsorbents
with a broad spectrum of action**

**Complementary feed
for poultry, layers
and ruminants**



Vegetal carbon



*Saccharomyces
cerevisiae cell walls*



Kaolin clay



*Kieselgur (purified
diatomaceous ground)*



**Against:
Aflatoxin, Zearalenon,
Deoxynivalenol, Fumonisin**



BINDER PLUS

ADDITIVES (per kg)

Bentonite - Montmorillonit 1m558i.....400.000 mg
Kaolin clay - asbestos free E 559.....100.000 mg
Kieselgur (purified diatomaceous ground) E 551c.....100.000 mg

Composition:

Vegetal carbon, Saccharomyces cerevisiae cell walls

Use indication:

Use in case of suspected or confirmed contamination by mycotoxins
Layers.....1-3 Kg/Ton
Broilers.....1-4 Kg/Ton
Beef cattle.....20-40 g/head/day or 3-5 kg/Ton
Dairy cows.....40-70 g/head/day or 5-8 kg/Ton



METHODO MYCOTOX

ADDITIVES (per kg):

Natrolite-phonolite (E566).....100.000 mg
Clinoptinolite (1g568).....750.000 mg
Bentonite (1m558).....100.000 mg

Composition:

Saccharomyces cerevisiae cell walls

Use indication:

Mix to the other components of the feed at the rate of 0.5 -2.0 Kg / Mt of finished feed



SORBACID

ADDITIVES (per kg)

Sodium formate E237.....450.000 mg
Calcium Propionate E 282.....250.000 mg
Silicic acid precipitated and dried E 551a.....4.000 mg
Bentonite-Montmorillonite 1m558i.....125.000 mg

Composition:

Vegetal carbon

Use indication:

Use in case of suspected or confirmed contamination by mycotoxins
Dairy cows:.....40-70 g/head/day
Beef cattle:.....20-40 g/head/day
Broiler:.....1-4 kg/ton
Hens:.....1-3 kg/ton



MYCO MOS

ADDITIVES (per liter):

Dried Cell Wall of Saccharomyces cerevisiae.....150.000 mg
Lactic acid (80%).....90.000 mg
Orthophosphoric acid(75%).....90.000 mg
Citric acid (99%).....80.000 mg
Propionic acid (99%).....70.000 mg
Malic acid (99%).....10.000 mg

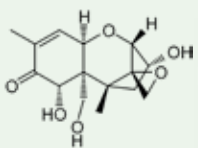
Composition:

water

Use indication:

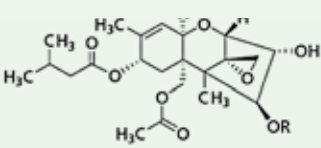
1-3 liters per 1000 liters of drinking water or 2-6 liters per ton of complete feed

Mycotoxin effects:



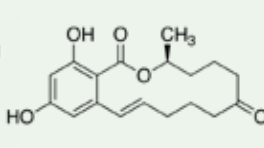
Deoxynivalenol

Less food consumption and lower FCR. Feed refusal. Vomiting.



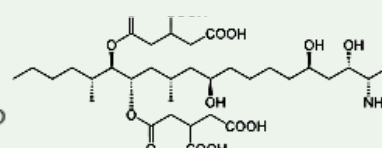
T-2

Hemorrhages, enteritis. Less ingestion feed. Feed refusal.



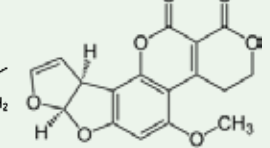
Zearalenone

Vulva swelling and redness. Heat on pregnant cows. Less FCR. Infertility, nymphomania, reduced ovaries of volume.



Fumonisin

Liver intoxication. Enteritis and abdominal pain. Loss of appetite. Neurotoxic effects.



LD50 Aflatoxin B1

Reduced performances. Liver intoxication. **Withdrawal of milk from the market at exceeding legal limits.** Pathological anatomical examination: Dark and very hard liver. Hemorrhagic lymph nodes. Dense and black bile.